

Steel Mounting Clamp

5SAC10V16

4, 8, 12 & 16 kN

Clamping system for hockey-puck devices with flange diameter up to 75 mm, mounting force 4 - 16 kN

Features:

Corrosion resistant

Clamping force 4, 8, 12, 16 kN (-10%, +20%)

ABB's patented correct clamping force indicator

| Type and Ordering number | Bolt | | Weight kg | F _m Clamping force kN | V _c Max. isolation voltage kV | V _m Voltage for partial discharge kV | T _m Max. temp. for continuous operation °C | Fig. |
|--------------------------|--------|----------|--------------|--|--|---|---|------|
| | Length | Distance | | | | | | |
| | mm | mm | | | | | | |
| 5SAC 10V1610 | - | 102 | 0.09 | 4,8,12,16 | - | - | 80 | 1 |
| 5SAC 10V1600 | 110 | 102 | 0.40 | 4,8,12,16 | 6.5 | > 6.5 | 80 | 2 |
| 5SAC 10V1601 | 120 | 102 | 0.40 | 4,8,12,16 | 6.5 | > 6.5 | 80 | 2 |

Fig. 1
5SAC 10V1610

Each part number includes:

1. Leaf spring
2. Clamping force indicator

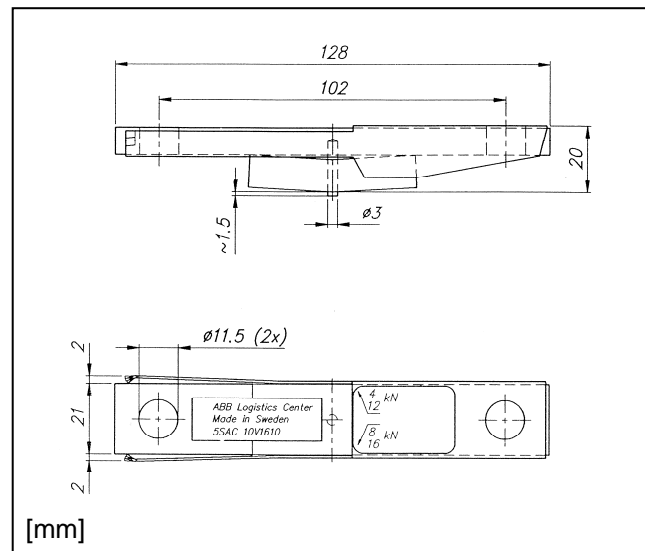
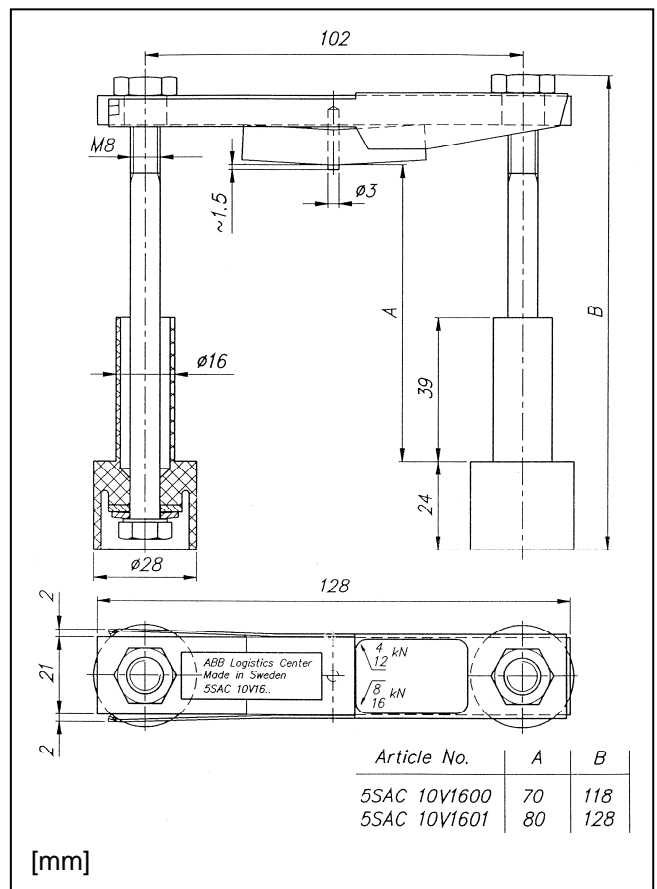


Fig. 2
5SAC 10V1600
5SAC 10V1601

Each part number includes:

1. Leaf spring
2. Clamping force indicator
3. Bolts and nuts
4. Bolt insulators
5. Plain washers
6. Disc washers



Recommendations for piece parts:

| Piece part | Material | Dimensions mm | Included in products |
|--------------|---------------------------------|---------------------------------|-------------------------|
| Bolt | Coated or stainless steel | M8 property class 8.8 (DIN 931) | Fig. 2 |
| Plain washer | | 8.4 x 20 x 2 | Fig. 2 |
| Disc washer | | 8.4 x 18 x 2 (DIN 6796) | Fig. 2 |

Aluminium Mounting Clamp

5SAC10V10

10 kN

Clamping system for hockey-puck devices with flange diameter up to 75 mm, mounting force 10 kN

Features:

Not sensitive to magnetic fields

Low weight

High alloy content makes clamp exceptionally strong

Clamping force 10 kN (-10%, +20%)

ABB's patented correct clamping force indicator

| Type and Ordering number | Bolt | | Weight kg | F _m Clamping force kN | V _c Max. isolation voltage kV | V _m Voltage for partial discharge kV | T _m Max. temp. for continuous operation °C | Fig. |
|--------------------------|--------|----------|--------------|--|--|---|---|------|
| | Length | Distance | | | | | | |
| | mm | mm | | | | | | |
| 5SAC 10V1010 | - | 102 | 0.12 | 10 | - | - | 80 | 1 |
| 5SAC 10V1000 | - | 102 | 0.13 | 10 | 4.8 | > 4.8 | 80 | 2 |
| 5SAC 10V1001 | 100 | 102 | 0.24 | 10 | 4.8 | > 4.8 | 80 | 3 |

Fig. 1
5SAC 10V1010

Each part number includes:

1. Leaf spring with clamping force indicator
2. Pressure pad

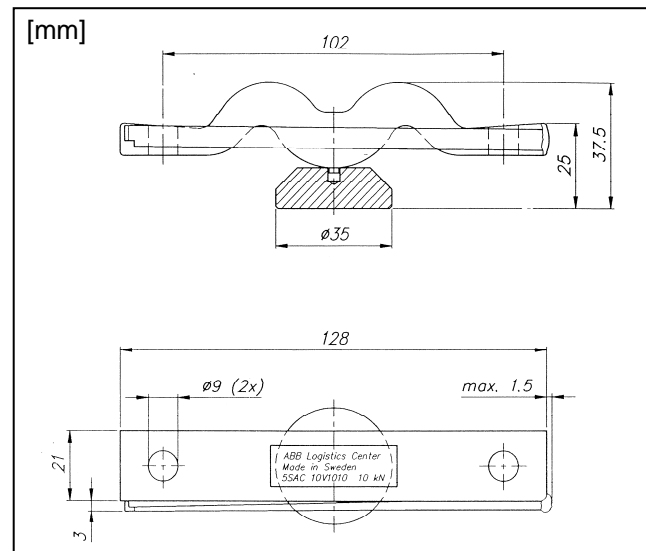
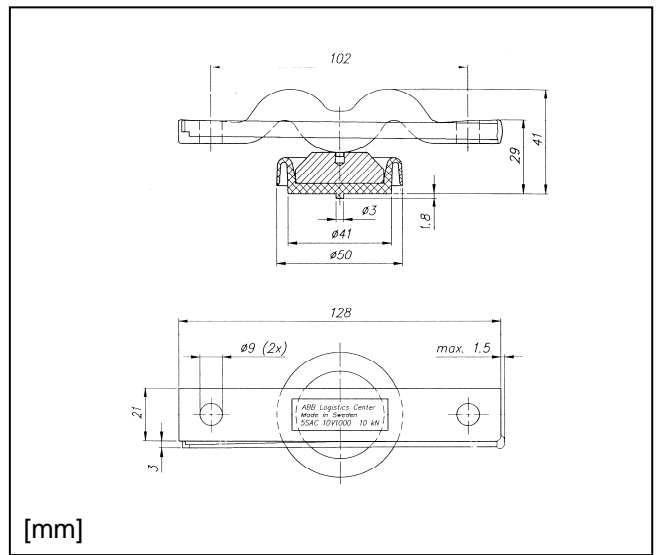


Fig. 2
5SAC 10V1000

Each part number includes:

1. Leaf spring with clamping force indicator
2. Pressure pad
3. Pressure pad insulator

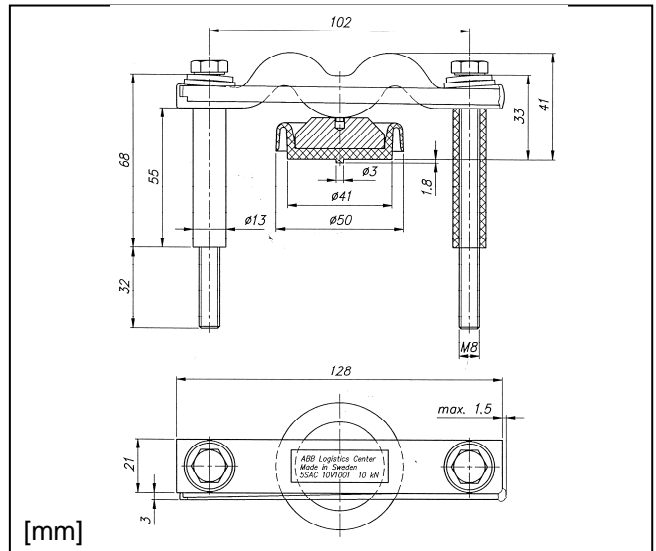


[mm]

Fig. 3
5SAC 10V1001

Each part number includes:

1. Leaf spring with clamping force indicator
2. Pressure pad
3. Pressure pad insulator
4. Bolts (M8x100)
5. Bolt insulators
6. Plain washers
7. Disc washers



[mm]

Recommendations for piece parts:

| Piece part | Material | Dimensions mm | Included in products |
|--------------|---------------------------------|---------------------------------|-------------------------|
| Bolt | Coated or stainless steel | M8 property class 8.8 (DIN 931) | Fig. 3 |
| Plain washer | | 8.4 x 20 x 2 | Fig. 3 |
| Disc washer | | 8.4 x 18 x 2 (DIN 6796) | Fig. 3 |